



[2019-04]

|  |                       |                      |                        |   |  |
|--|-----------------------|----------------------|------------------------|---|--|
|  한국문화원<br>Korean Cultural Center<br>Los Angeles |                       | <b>Press Release</b> |                        |  |  |
| Request  | For Immediate Release |                      |                        | Pages : 5   |  |
| Date of Release  | 1.23.2019 (Wednesday) | Contact              | Tammy Cho 323-936-3014 |   |  |

## 2019 LA Art Project 2: Core Evolution

*“Woman Power; encounter the three pioneers.”*



MIRANG WONNE

YOONCHUNG PARK KIM

HEI MYUNG C. HYUN

2019 LA Art Project II

*Core Evolution*

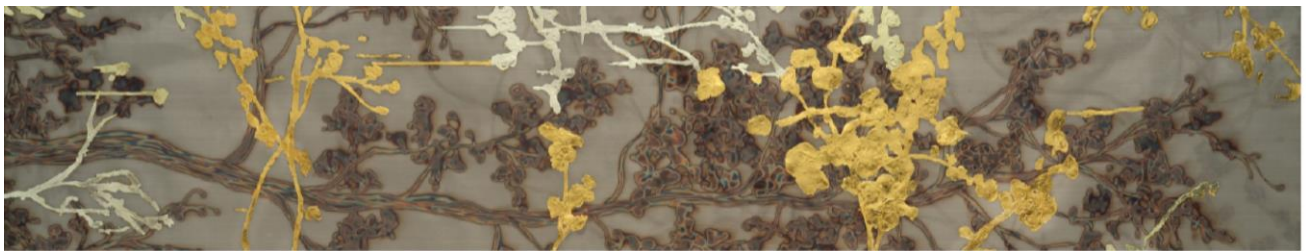
February 1 - 15, 2019

Gallery Open Hours: Mon-Fri 10am-5pm / Sat 10am-1pm  
5505 Wilshire Blvd Los Angeles, CA 90036  
323-936-3014

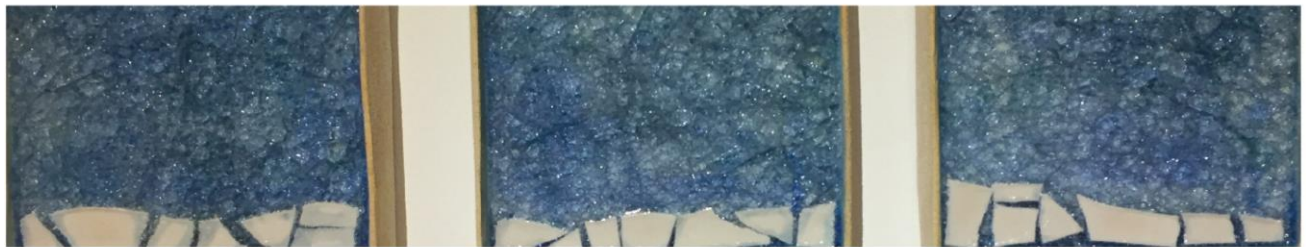
- ▶ Title: Core Evolution
  - ▶ Date: February 1st(Fri) – February 15th(Fri), 2019
  - ▶ Opening Reception: Friday, Feb. 1, 2019 at 7:00pm
  - ▶ Location: Korean Cultural Center Los Angeles Art Gallery (2nd Floor)  
5505 Wilshire Blvd. Los Angeles, CA 90036
  - ▶ Presents: Korean Cultural Center Los Angeles
  - ▶ More information: Tammy Cho, at 323-936-3014 or [exhibition@kccla.org](mailto:exhibition@kccla.org)
- \* Gallery Open Hours: Mon-Fri 10am-5pm / Sat 10am-1pm

**The Korean Cultural Center Los Angeles** proudly presents the second exhibition of 2019 LA Art Project, < Core Evolution > which will take place from February 1<sup>st</sup> to the 15<sup>th</sup> at the Korean Cultural Center Art Gallery, located at 5505 Wilshire Blvd. Los Angeles, CA 90036.

At this exhibition, three female artists, Mirang Wonne (San Francisco), Yoonchung Park Kim (San Diego), and Hei Myung C. Hyun (Los Angeles) from southern California will tell their stories through their artwork.



MIRANG WONNE



YOONCHUNG PARK KIM



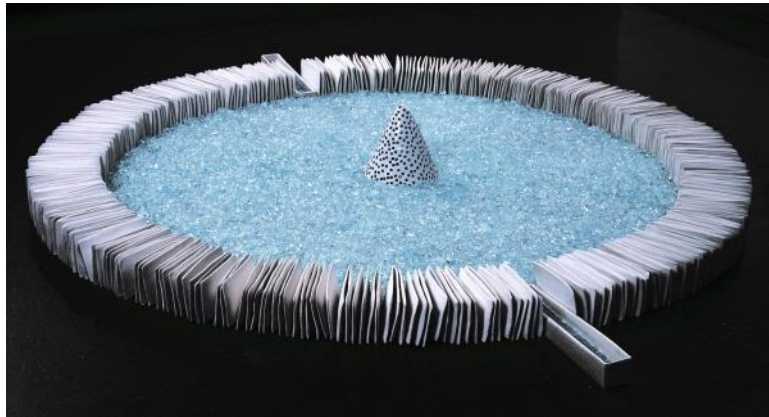
HEI MYUNG C. HYUN

Nowadays, artwork by Korean American artists are readily available to the public. However, this wasn't the case in the 1960s, especially for female artists. After graduating from Korean universities in the 1960s, these artists, individually, went to study in America and France, only to get culturally shocked by new ideas. They had to fight their fixed ideologies and find their new identities through a chaotic identity search. They steadily moved forward by harmonizing Eastern and Western cultures and by solidifying their beliefs. These artists continue to passionately endeavor in the roots of California.

► **Yoonchung Park Kim**

While she was in Berkeley doing her graduate study, she was torn and lost between contradicting cultures and aesthetics. She started to re-evaluate and deprogram her early training. She wanted to begin again as a little child playing in the sand making her own marks. It gave her a chance to discover who she really was. And most importantly it taught her to not fear being lost or different. It has become a point of reference and an inspiration of freedom.

She chooses pieces from two different series for this exhibition, "Ice and Water" "Sending Writings".



*Installation, 365 for One 8x70x62inches porcelain, glass & light*

"Ice and Water" was inspired by her visit to Alaska. Her fascination with nature has had a profound influence on her works.



*Sending writings II 20 x 26 x 3 Clay and glass*



Her current series "Sending Writings" are pieces created to include her daily writings and her deceased husband writings, symbolically sending out into the ocean on the wave or to the fruit grove her husband created. It is the way of continuing communicating with him, which is a big part of their relationship she misses, thus making the "moment to permanent."

► **Mirang Wonne**

She is fascinated by the energy in California light, which is so intense and abundant. She wishes to capture and reinterpret this amazing energy into her art with her own language; this results in all of her installations, very often titled "California Light," "Lines and Lights," "Capturing Sunlight," or "Bulkot," which literally translates to "Fire Flowers."

In her installation work series, she uses industrial materials such as stainless-steel mesh as her main material. After trying many other mediums such as galvanized wire, copper mesh, she found this stainless-steel mesh to be the best medium for her concept, since it is light but very sturdy, luminous like metal, and does not erode over time. With a blow-torch, she burns the metal and "draw" lines on the surface.



Installation "Lines and lights"  
Double layers of stainless-steel mesh, torched and acrylic painted, wooden bars.



"Gold Tree 7240-1 & 7240-2"  
72x40 inches, 24K, 18K and 12K genuine gold leaf on double layers of torched stainless-steel mesh, wrapped over the canvas

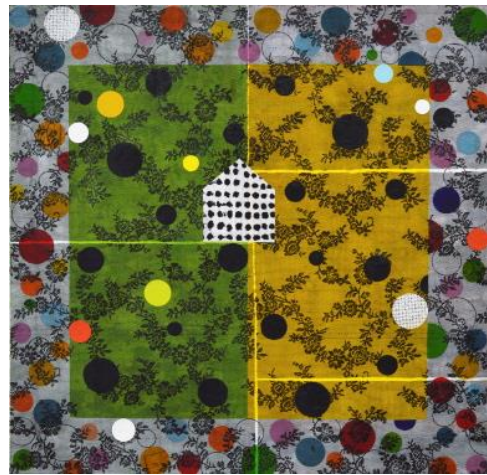
## ► Hei Myung C Hyun

Bridging the gap between two vastly different cultures has challenged and enriched her as an artist. In the ocean between the two societies she has found a wide and deep source of visions. By making art that incorporates East and West, she has been fulfilled through the process of making art that truly reflects her unique experience as a person and an artist.

This push and pull between cultures manifest itself in the work. Abstraction and figuration, the East and the West, tradition and modernity: these tensions are resolved through various tools and compositional structures found in both Eastern and Western art.



Hope 1803-1804' 60x76 2018 Mixed Media



Romance 1801' 40x40 2018 Mixed Media

The exhibition is open to the public and the opening reception will be held on Friday, Feb. 1st, 2019 at 7:00p.m. at the KCCLA 2<sup>nd</sup> floor art gallery. If you are interested in attending the opening ceremony or for more information, please RSVP at [www.kccla.org](http://www.kccla.org) or call 323-936-3014.