


[2019-19]

 한국문화원 Korean Cultural Center Los Angeles		<b>Press Release</b>			
Request	For Immediate Release			Pages : 5	
Date of Release	4.25.2019 (Thursday)	Contact	Tammy Cho 323-936-3014		

## Special Exhibition: Chasing Passion

*“ Two Passionate Artists, One Exhibition ”*



- ▶ Title: Chasing Passion
  - ▶ Date: May 2nd(Thurs) – May 17th(Fri), 2019
  - ▶ Opening Reception: Thursday, May 2, 2019 at 7:00pm
  - ▶ Location: Korean Cultural Center Los Angeles Art Gallery (2nd Floor)  
5505 Wilshire Blvd. Los Angeles, CA 90036
  - ▶ Presents: Korean Cultural Center Los Angeles
  - ▶ More information: Tammy Cho, at 323-936-3014 or [exhibition@kccla.org](mailto:exhibition@kccla.org)
- \* Gallery Open Hours: Mon-Fri 10am-5pm / Sat 10am-1pm

**The Korean Cultural Center Los Angeles** proudly presents the special exhibition < Chasing Passion > which will take place from May 2<sup>nd</sup> to the 17<sup>th</sup> at the Korean Cultural Center Art Gallery, located at 5505 Wilshire Blvd. Los Angeles, CA 90036.

At this exhibition, two artists, Heysook Park & David B. Jang will tell their stories through their artwork. They are known as the "Passionate Artists" among critics. One artist paints life stories through bold brushstrokes which shows not only creative work but also passion that's embedded in life. The other artist says that art is all about survival, or in other words, life tactics. He continues to make beautiful art by utilizing and recreating abandoned items and brings them to life.

► **Hyesook Park**

Hyesook Park's work has been shown widely in Los Angeles and Korea for the past thirty years. Her work ranges from the earlier colorful figuration with hints of narrative and symbolism to her recent abstractions, monochrome fields marked by scratches, drips, abrasions and bits of collage.



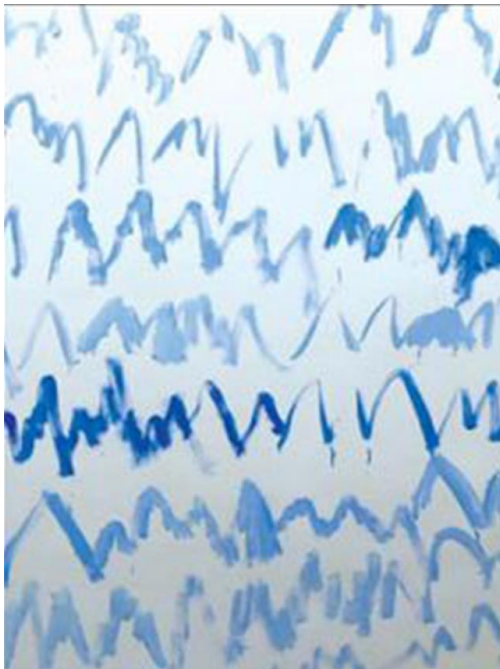
*Bowl, 84x72 inches, Acrylic & Oil on Canvas*



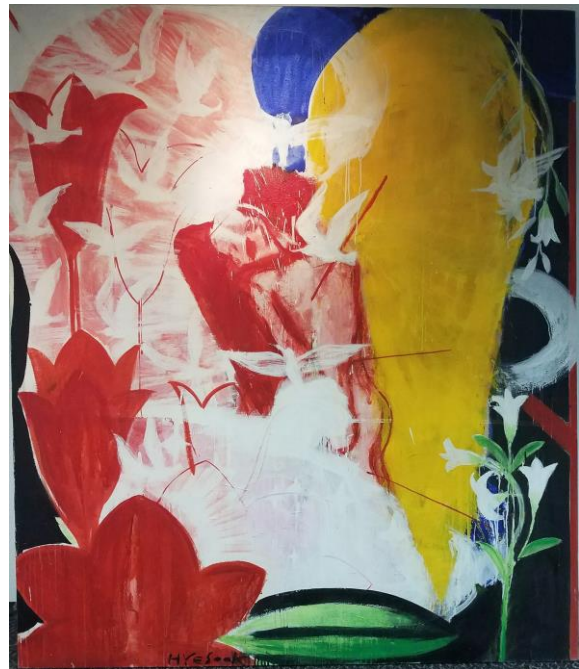
*Skirt, 72x72 inches, Oil on Canvas*

She was recognized for her large expressionistic canvases fairly early in her career, but she struggled financially as an artist and immigrant. To make this situation even worse, a fire destroyed her studio, engulfing twenty years of her artwork. However, she didn't find this loss devastating, and instead she found it to be liberating: it cleared space for new work. Park began experimenting with metallic gray diluted sumi ink brushed over

gessoed and modeling paste. The resulting symmetrical forms and white emerging from a dark matrix, suggest nocturnal landscapes and seascapes while remaining in clearly physicalized gestures.



*East Wind, 48x60 inches, Oil on Canvas*



*Summer Garden, 48x60 inches, Oil on Canvas*

She mentions that "Through painting, I search for or create space that I find reflected in Asian and Western art traditions," she says. "I am looking for depth of space represented on a flat surface. This depth of space goes beyond three dimensions to depict a personal cosmology. The content of my work is derived from political events, the history of painting, and personal experience."



► **David B. Jang**

Both an artist and an inventor, David B. Jang is known for his imaginative kinetic installations, which employ hacked consumer electronics and subverted household appliances. David B. Jang has exhibited both nationally and internationally at museums and galleries, including: The Museum of Contemporary Art, Los Angeles; Laguna Art Museum; Museum of Art and History; Torrance Art Museum; Los Angeles International Airport; Nagasaki Museum of Fine Art, Japan; Paju Kyoha Art Center, Korea.

His work is about survival, or what he calls "life tactic." For him, survival requires the transformation and maintenance of continuous order, and order means harnessing energy. But because energy and matter cannot be destroyed, only transformed, his works engage in this reality by maintaining a constant state of motion, transforming and transferring themselves over time. The task of his work is to produce line and mass in various states – a process in which the work is never realized in its final form, but just like our body, is only continuously progressing. Requiring the continuous transfer of energy, these ordering systems will almost always be found in the state of maximum disorder, or will move towards it. 'Meaning' is possible by creating order against the law of entropy. He is interested in things that can set in a mode of constant production and form-making, thus, ordering, and therefore in a constant state of 'meaning creation'. This meaning generation is connected to the human compulsion to produce forms which are connected to the technological system of production that we have set into motion. The behavior of technological systems of production are random and opportunistic, just like the behavior of humans. These objects we are interacting with us every day, causing us to become remote from the physical interaction with reality.



Deflecting Production (extended)  
 132" x 312" x 168" (dimensions variable)  
 electric motor, steel, motion sensor and custom  
 circuit board  
 2016 - 2019



Paint Circuit  
 120"x312" (dimensions variable)  
 electronic circuit and paint on canvas  
 2019



*Harness 1, 2, 3, & 4*  
 60"x60" (each Torched Aluminum Cans and Oil on Wood)  
 2019

He is constantly seeking self-organizing systems known as autocatakinetics. The material of his artworks and operations and activities function as morphemes, that is, as the grammar of a sociological language. He sees industrial society operating as a living organism, because it is combined with the treatment of organic life forms within from our existence.

The exhibition is open to the public and the opening reception will be held on Thursday, May 2<sup>nd</sup>, 2019 at 7:00p.m. at the KCCLA 2<sup>nd</sup> floor art gallery. If you are interested in attending the opening ceremony or for more information, please RSVP at [www.kccla.org](http://www.kccla.org) or call 323-936-3014.