


[2019-69]

 한국문화원 Korean Cultural Center Los Angeles		<b>Press Release</b>			
Request	For Immediate Release			Pages : 4	
Date of Release	11.22.2019 (Friday)	Contact	Tammy Cho 323-936-3014		

**2019 LA Art Project 6**  
**The 14th Photographers Society of Southern California Exhibition**  
**Riches of the land "Sound of Winter"**



- ▶ Title: The 14th Photographers Society of Southern California Exhibition  
Riches of the land "Sound of Winter"
  - ▶ Date: December 6th(Fri) – December 14th(Sat), 2019
  - ▶ Opening Reception: Friday, December 6, 2019 at 7:00pm-9:00pm
  - ▶ Location: Korean Cultural Center Los Angeles Art Gallery (2nd Floor)  
5505 Wilshire Blvd. Los Angeles, CA 90036
  - ▶ Presenters: Korean Cultural Center Los Angeles &  
Photographers Society of Southern California
  - ▶ More information: Tammy Cho, at 323-936-3014 or [exhibition@kccla.org](mailto:exhibition@kccla.org)
- \* Gallery Open Hours: Mon-Fri 10am-5pm / Sat 10am-1pm



*Alex S. Kim*



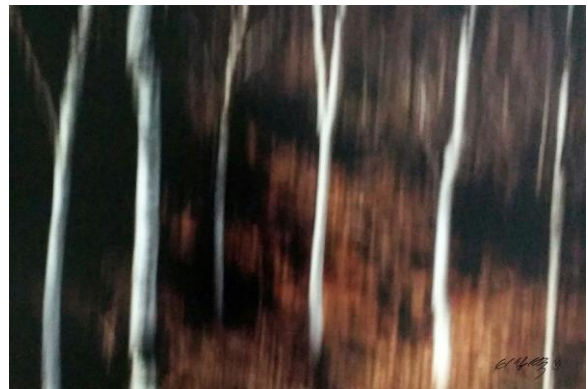
*Sung Moon*

**The Korean Cultural Center Los Angeles (KCCLA/Director Wijin Park) & Photographers Society of Southern California (President Alex S. Kim) proudly present the sixth exhibition of the 2019 LA Art Project, < The 14th Photographers Society of Southern California Exhibition: Riches of the land "Sound of Winter" >**, which will take place from December 6<sup>th</sup> to December 14<sup>th</sup>, 2019 at the Korean Cultural Center Art Gallery, located at 5505 Wilshire Blvd. Los Angeles, CA 90036.

Every year, the Photographers Society of Southern California has presented works of a single theme, and this year's theme is "Sound of Winter". This exhibition will display over 35 photographs by profound photographers, Korean Artists, and local other community artists, and each piece will truly resonate a sense of warmth and passion within the viewers' hearts.



*Kathy Lee*



*Sangbyuck Lee*



*Heebin Im*



*Jin Park*

Director Wijin Park of the Korean Cultural Center, Los Angeles (KCCLA) says, " Each individual artwork is a path to the artist's soul and mind. As camera lenses capture what is oblivious to one's eyes, we will be able to recognize traces of winter we often miss. Furthermore, this exhibition showcases photographs that illustrate people and landscapes of various countries, as the South California photographer association's members travelled around the world to capture such moments."

Following the opening ceremony, the Photographers Society of Southern California will give away 2020 calendar that is made by work of members of Photographers Society of Southern California. You will have the opportunity to view wonderful works and also have the chance to get the new year's calendar at the opening reception.

The exhibition is open to the public and the opening reception will be held on Friday, December 6<sup>th</sup>, 2019 at 7:00p.m. at the KCCLA 2<sup>nd</sup> floor art gallery. The show will run until December 14<sup>th</sup>, 2019. If you are interested in attending the opening ceremony or for more information, please RSVP at [www.kccla.org](http://www.kccla.org) or call 323-936-3014.



▶ **Participating Artists:**

**Photographers Society of Southern California Exhibition (total 10 Artists)**

Alex S.Kim / Sangbyuck Lee / Helen Shin / Sung Moon / Joonchul Lee / Jin Park /  
Kathy Lee / Kevin Choi / Heebin Im / Erin Gwon